



Acct# 1018326

Wilson Tool Intl. Plant
12912 Farnham Avenue
WHITE BEAR LAKE, MN 55110
US

Ship Via: UPS Ground
SO: 983331-40
Prod Ord: 7362733
P.O. Number 77856
Payment Terms Net due in 10 days

Sold To Triax Metal Products LLC
1880 SW Merlo Drive
CharBEAVERTON OR 97006
US

Ship To Triax Metal Products LLC
1880 SW Merlo Drive
BEAVERTON OR 97006
US

Contact: Shaun Fitch

Phone: 503-649-9500

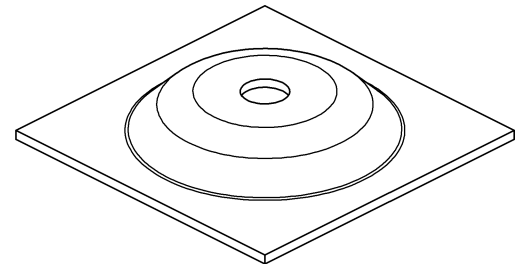
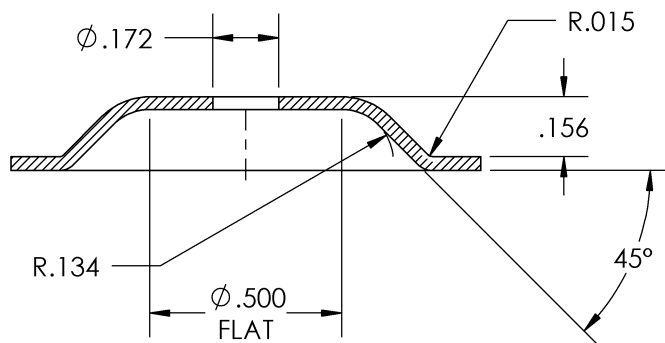
Fax: 503-649-1888

Email: shaun@triaxmetal.com

| | | | |
|---|--------------------------------|----------------------------------|---|
| Order Date 09/27/2012 | Target Ship Date 10/05/2012 | Question Contact Matthew King | Instructions PLEASE INCREASE RADS TO HELP REDUCE TEARING IN FORM |
| QTY: 1 2240 1-1/4 Thick Emboss Round Form-Up (>0.375) | | | Shape:RD |
| CUSTOMER WILL PREPUNCH FOR .172" FINISHED HOLE ON TOP | | | |
| STATION: B STATION (1-1/4) | RELIEF: NO RELIEF | KEYING: STANDARD | MATL: COLD ROLL |
| | AUTO INDX: NO | | MATL THK: 0.0360 in |
| MACHINE: AMADA | | | |
| MODEL: VIPROS 358 | | | COATING: NO COATING |
| Item 1 - FULL SET | | | |
| Item 2 - LTD WARRANTY FINISH FORM | | | |

APPROXIMATE PRE PUNCH: $\phi .070$

- * THIS FORM & TOOL REQUIRES A MINIMUM FEED CLEARANCE OF: .366
- * THE ASSEMBLED DIE HEIGHT IS APPROXIMATELY: 1.361
- * THE APPROXIMATE ADJUSTED PUNCH LENGTH IS : 8.034



JCC
PROD# 7362733