



Acct# 1018326

Wilson Tool Intl. Plant
12912 Farnham Avenue
WHITE BEAR LAKE , MN 55110
US

Sold To Triax Metal Products LLC
1880 SW Merlo Drive
CharBEAVERTON OR 97006
US

Ship Via: UPS Ground
SO: 968830-40
Prod Ord: 7291977
P.O. Number 77847
Payment Terms Net due in 10 days

Ship To Triax Metal Products LLC
1880 SW Merlo Drive
BEAVERTON OR 97006
US

Contact: Shaun Fitch

Phone: 503-649-9500

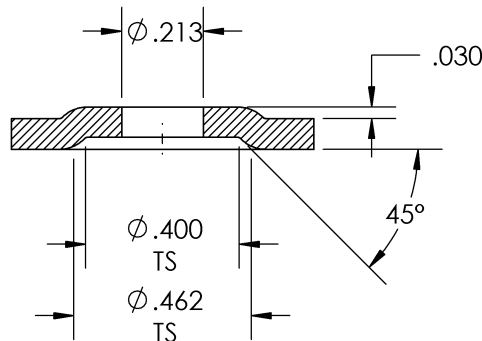
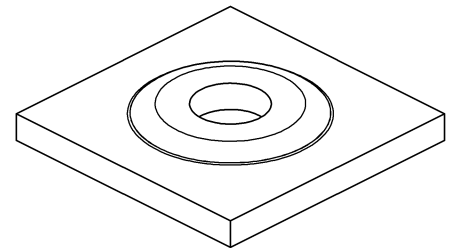
Fax: 503-649-1888

Email: shaun@triaxmetal.com

Order Date	Target Ship Date	Question Contact	Instructions
08/08/2012	08/09/2012	Craig Roy-Nyline	
QTY: 1 2240 1-1/4 Thick Emboss Round Form-Up (>0.375) Shape:RD			
.462 DIA. EMBOSS			
STATION: B STATION (1-1/4)	RELIEF: NO RELIEF	KEYING: STANDARD	MATL: ALUMINUM
	AUTO INDX: NO		MATL THK: 0.0800 in
MACHINE: AMADA			
MODEL: VIPROS 358			COATING: NO COATING
Item 1 - FULL SET			

APPROXIMATE PRE PUNCH: Ø.236

- * THIS FORM & TOOL REQUIRES A MINIMUM FEED CLEARANCE OF: .156
- * THE ASSEMBLED DIE HEIGHT IS APPROXIMATELY: 1.233
- * THE APPROXIMATE ADJUSTED PUNCH LENGTH IS : 7.990



REF:
FORM-UP-CH
OR# 6630023

ALG
PROD# 7291977