



Acct# 1018326

Wilson Tool
12912 Farnham Avenue
WHITE BEAR LAKE, MN 55110
US

Ship Via:	UPS 3 Day Select
SO:	1415679-10
Prod Ord:	9945923
P.O. Number	85007
Payment Terms	Net due in 10 days

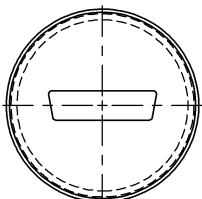
Sold To Triax Metal Products LLC
1880 SW Merlo Drive
BEAVERTON OR 97003
US

Ship To Triax Metal Products LLC
1880 SW Merlo Drive
BEAVERTON OR 97003
US

Contact: Shaun Fitch Phone: 503-649-9500-140 Fax: 503-649-1888 Email: shaun@triaxmetal.com

Order Date 10/21/2016	Target Ship Date 10/27/2016	Question Contact Ruben Macias	Instructions
QTY: 1 5608 3-1/2 Thick HP Custom Shape			Shape:GROUP B
TRAPEZOID			
STATION: D STATION (3-1/2)	RELIEF: NO RELIEF	KEYING: STANDARD	MATL: MILD STEEL
STYLE: SERIES 80/90	AUTO INDX: NO		MATL THK: 0.0600 in
MACHINE: AMADA	AUTO LOAD: NO	EJECTOR: NO EJECTOR	
MODEL: PEGA 345		SHEAR: FLAT	COATING: NO COATING
Item 1 - PUNCH, DIE AND STRIPPER, POSITIVE, CLR: 0.0100 in			

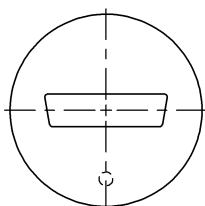
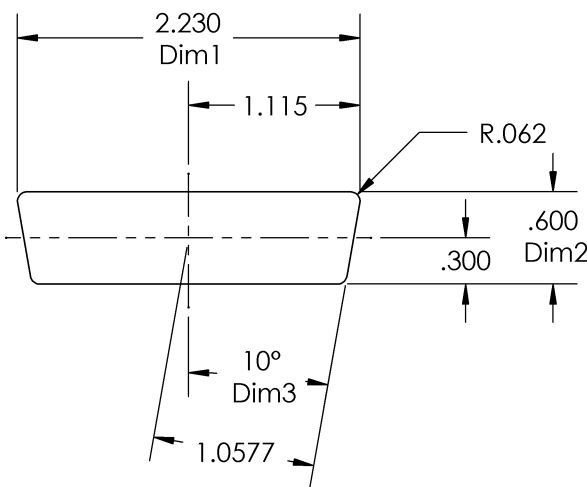
S23



Q21 STRIPPER VIEW

A-DIM= 2.5
SBR= Standard
(1.0)
DIE LAND= Standard

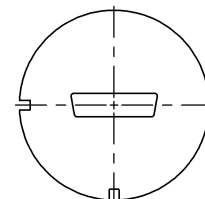
TOOL NOTES:



Q21 PUNCH VIEW

DESIGNER: JD-NC 25
DIM1 = 2.23 DIM3 = 10
DIM2 = 0.6 DIM4 = 0.062

CAD FILE RECVD: <None>
DIM5 = 0.062 X OFFSET= 0
DIM6 = 0.062 Y OFFSET= 0
DIM7 = 0.062 SHAPE @ 90°



QS1 DIE VIEW