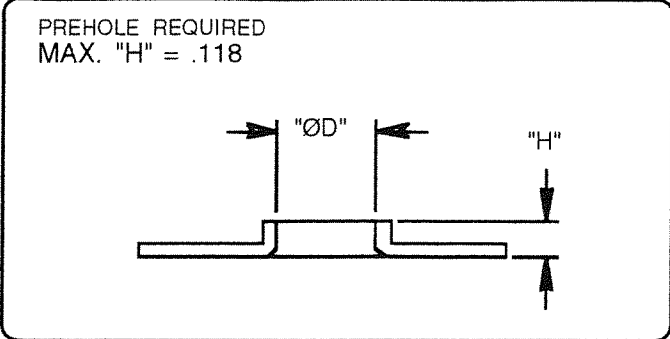
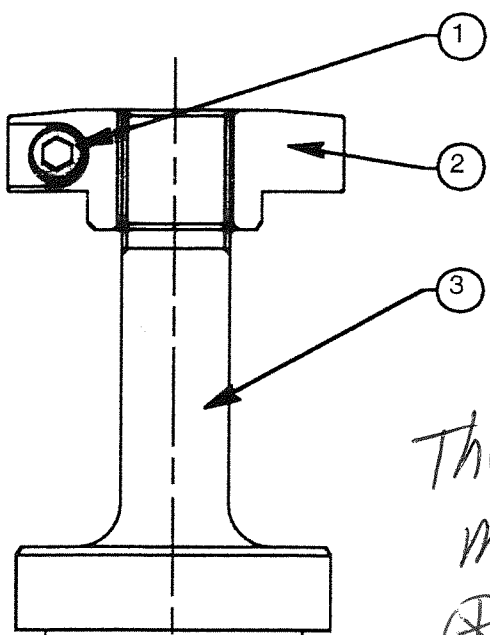


1 1/4" THICK ROUND CHIP TYPE EXTRUSION TOOL (STD.)

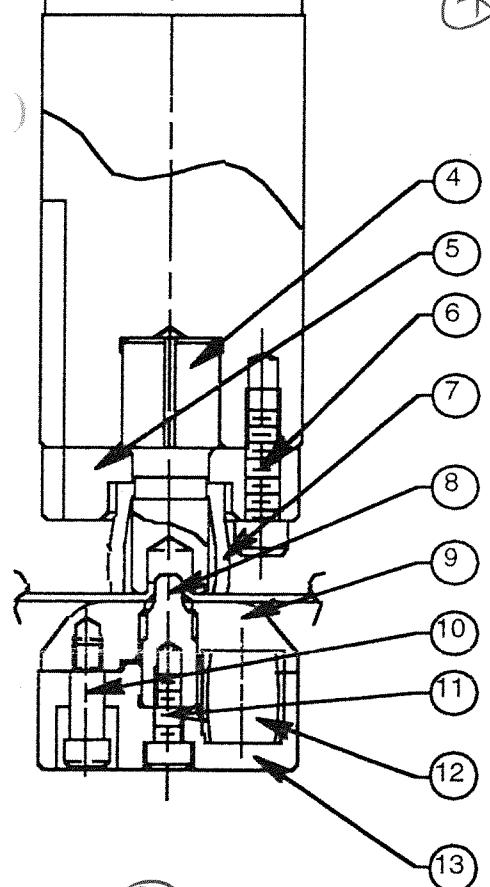
TOOL NUMBER	CUSTOMER NAME	DWG BY	DATE	MATERIAL INFO
PAEXT4011023	BEAVERTON PARTS MFG	STEVE	01/26/98	.060 CRS

# 9800041-1 DUE DATE: 1-26-98



Thick Turret  
M4 Up Ø.144  
⊕ 16 GA

QTY.	PART DESC.	PART NO.
0	SET	PAEXT401S
1	PUNCH ASS'Y	PAEXT401P
0	DIE ASS'Y	PAEXT401D

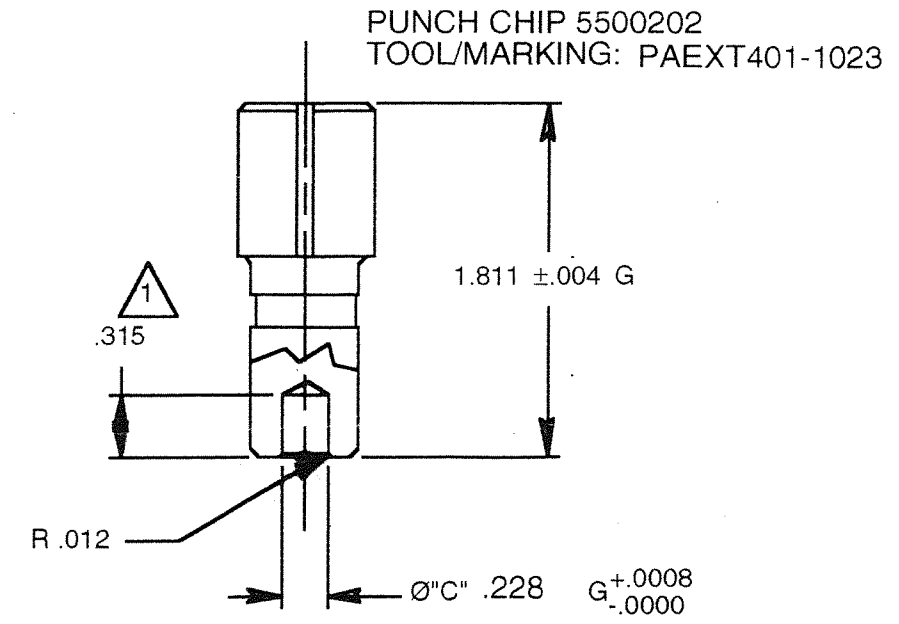


PUNCH ASS'Y			
NO	PART NO.	QTY.	DESCRIPTION
1	00106020	1	M6x20mm S.H.C.S
2	5523502P	1	PUNCH HEAD
3	5500201	1	PUNCH BODY (HOLDER)
4	5500202	1	PUNCH CHIP
5	5500203	1	PUNCH PLATE
6	00106020	4	M6x20mm S.H.C.S
7	5500204	1	URETHANE SPRING

DIE ASS'Y			
NO	PART NO.	QTY.	DESCRIPTION
8	9000181	1	DIE CHIP
9	5500206	1	EJECTOR PLATE
10	01006012	3	SHOULDER BOLT 6x12 (STO)
11	00105012	1	M5x12mm S.H.C.S.
12	01212025	3	Ø12x25mm URETHANE SPRING
13	5500221	1	DIE BLOCK

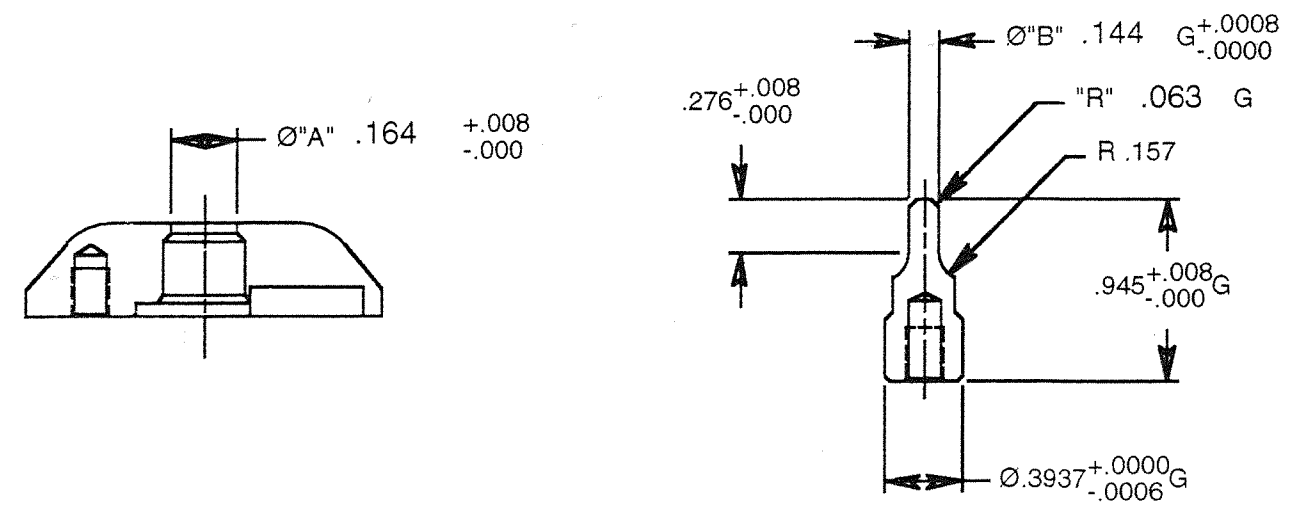
⊕ Drilled out opening to Ø.264 to accommodate 16 GA SS.  
Ordered a replacement at original spec.

NOTES:  
1.) LENGTH OF Ø"C"



PUNCH CHIP 5500202  
TOOL/MARKING: PAEXT401-1023

EJECTOR PLATE 5500206  
TOOL/MARKING: PAEXT401-1023



DIE CHIP 9000181  
TOOL/MARKING: PAEXT401-1023

REV		DESCRIPTION	APPROVED	DATE	DESCRIPTION : ROUND CHIP TYPE EXTRUSION TOOL (STD.)		CUSTOMER: BEAVERTON PARTS MFG	
ALL UNSPECIFIED TOLERANCES					DWG NO	STA SIZE	SCALE	SIZE B
					PAEXT4011023	125	1/1	
					ET #	TYPE	SHEET	
					PAEXT4011023	AESI THICK		
					DRAWN BY	DATE	MATERIAL	
					STEVE	01/26/98		
					CHECKED BY	DATE	Rc	REV