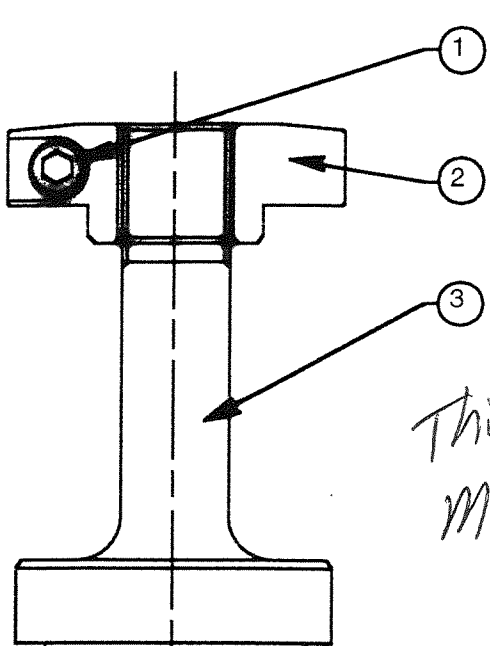


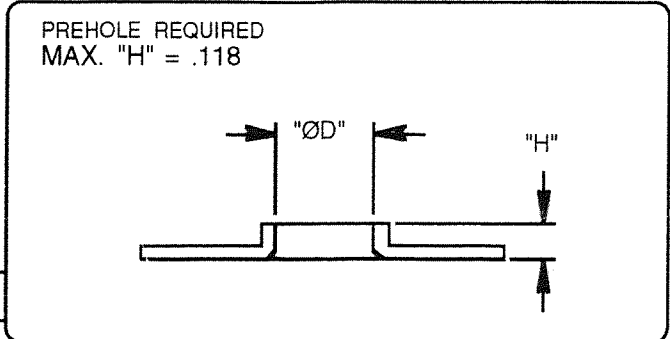
1 1/4" THICK ROUND CHIP TYPE EXTRUSION TOOL (STD.)

TOOL NUMBER	CUSTOMER NAME	DWG BY	DATE	MATERIAL INFO
PAEXT4011006	BEAVERTON PARTS MFG	STEVE	01/06/98	.048 CRS

#M 9794008-2 DUE DATE: 1-6-98



Thick Turret
M4 Up Ø.144
18 GA



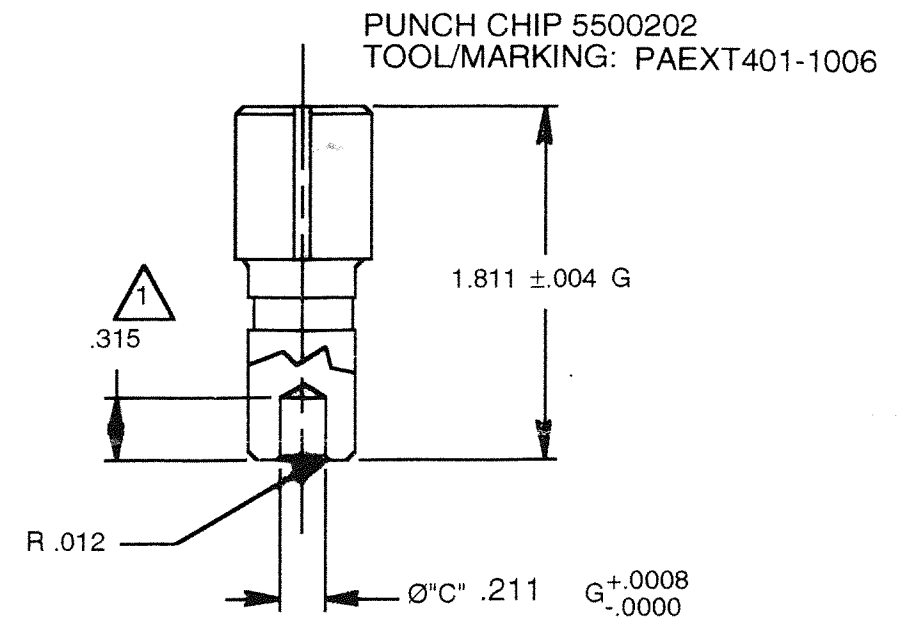
ØD .144

QTY.	PART DESC.	PART NO.
1	SET	PAEXT401S
0	PUNCH ASS'Y	PAEXT401P
0	DIE ASS'Y	PAEXT401D

PUNCH ASS'Y			
NO	PART NO.	QTY.	DESCRIPTION
1	00106020	1	M6x20mm S.H.C.S
2	5523502P	1	PUNCH HEAD
3	5500201	1	PUNCH BODY (HOLDER)
4	5500202	1	PUNCH CHIP
5	5500203	1	PUNCH PLATE
6	00106020	4	M6x20mm S.H.C.S
7	5500204	1	URETHANE SPRING

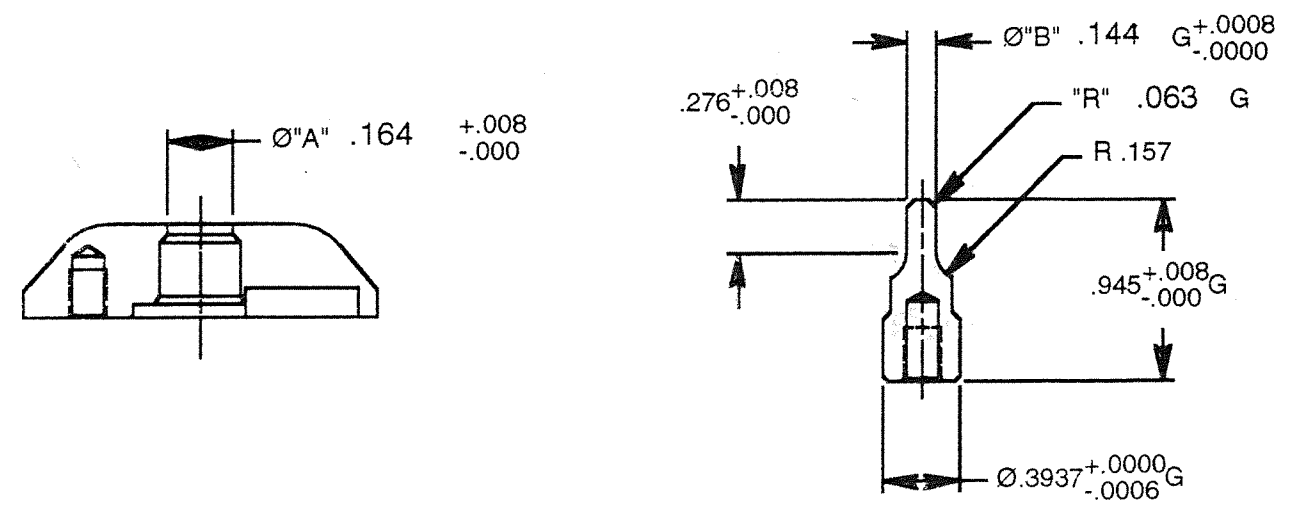
DIE ASS'Y			
NO	PART NO.	QTY.	DESCRIPTION
8	9000181	1	DIE CHIP
9	5500206	1	EJECTOR PLATE
10	01006012	3	SHOULDER BOLT 6x12 (STO)
11	00105012	1	M5x12mm S.H.C.S.
12	01212025	3	Ø12x25mm URETHANE SPRING
13	5500221	1	DIE BLOCK

NOTES:
1.) LENGTH OF Ø"C"



DIE CHIP 9000181
TOOL/MARKING: PAEXT401-1006

EJECTOR PLATE 5500206
TOOL/MARKING: PAEXT401-1006



REV		DESCRIPTION	APPROVED	DATE	CUSTOMER: BEAVERTON PARTS MFG			
REVISIONS					DESCRIPTION : ROUND CHIP TYPE EXTRUSION TOOL (STD.)		DWG NO PAEXT4011006	
ALL UNSPECIFIED TOLERANCES					STA SIZE 125		SCALE 1/1	
					TYPE AESI THICK		SHEET	
					TOOL/MARKING# PAEXT401-1006			
					DRAWN BY STEVE		DATE 01/06/98	
					CHECKED BY		DATE	
					MATERIAL		REV	

ALL UNSPECIFIED TOLERANCES				
INCH	LINEAR	<.63	<2.48-9.85	>9.85-39.37
TOLERANCE		±.008	±.020	±.032
LENGTH OF SHORTER LEG	ANGULAR	<39-1.97	<1.97-4.72	<4.72-15.75
TOLERANCE		±1°	±.35°	±.166°