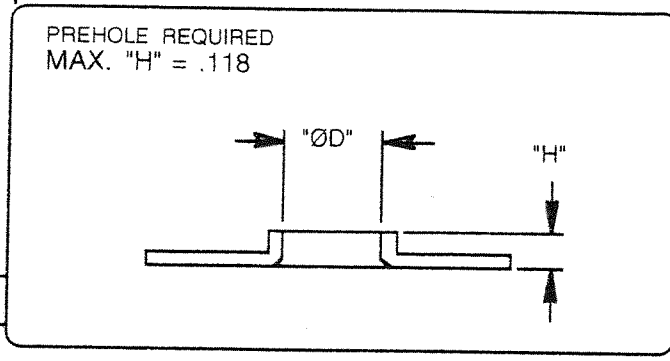
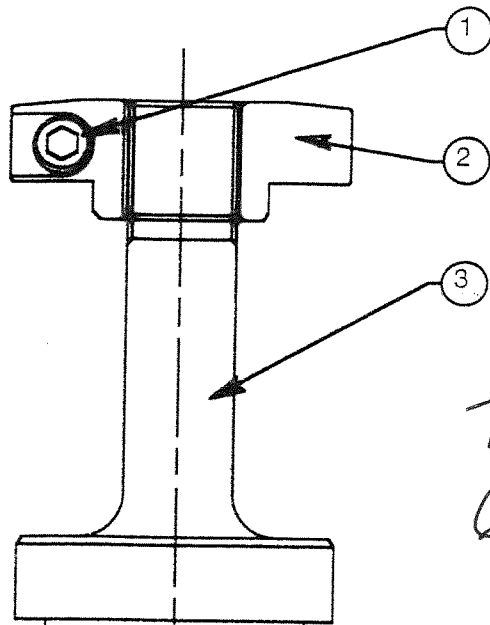


1 1/4" THICK ROUND CHIP TYPE EXTRUSION TOOL (STD.)

TOOL NUMBER	CUSTOMER NAME	DWG BY	DATE	MATERIAL INFO
PAEXT4010924	BEAVERTON PARTS MFG	STEVE	10/20/97	.048 CRS

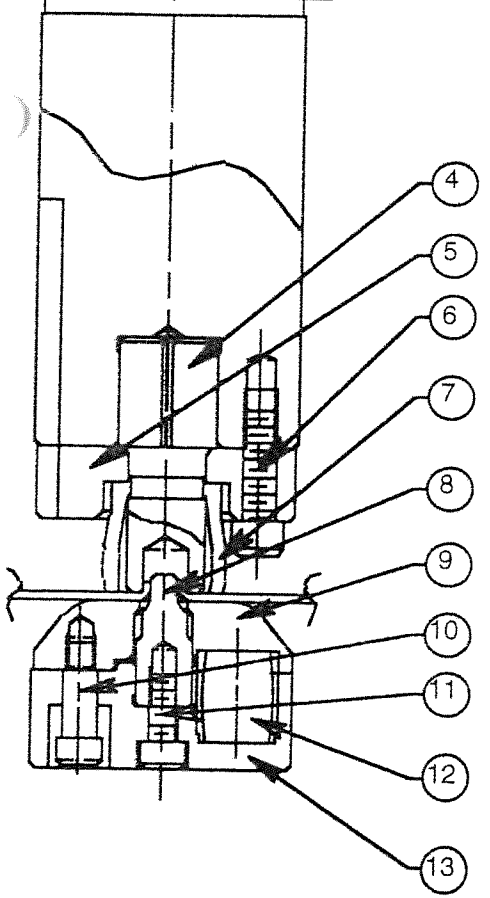
T# 9773395-3 DUE DATE: 10/20



Thick Turret
6-32 Up Ø.125
18 GA

ØD .125

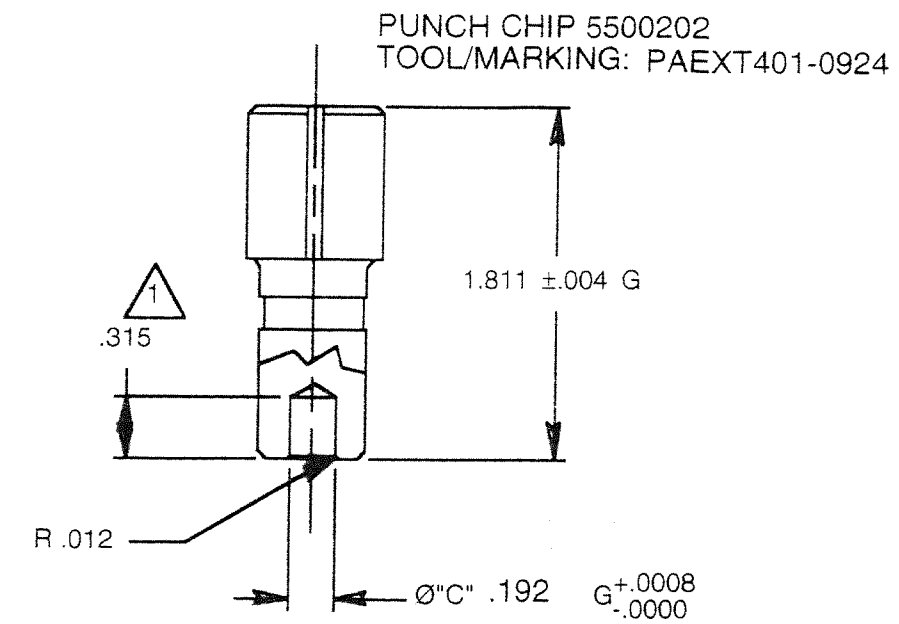
QTY.	PART DESC.	PART NO.
1	SET	PAEXT401S
0	PUNCH ASS'Y	PAEXT401P
0	DIE ASS'Y	PAEXT401D



NO	PART NO.	QTY.	DESCRIPTION
1	00106020	0	M6x20mm S.H.C.S
2	5523502P	0	PUNCH HEAD
3	5500201	0	PUNCH BODY (HOLDER)
4	5500202	0	PUNCH CHIP
5	5500203	0	PUNCH PLATE
6	00106020	4	M6x20mm S.H.C.S
7	5500204	0	URETHANE SPRING

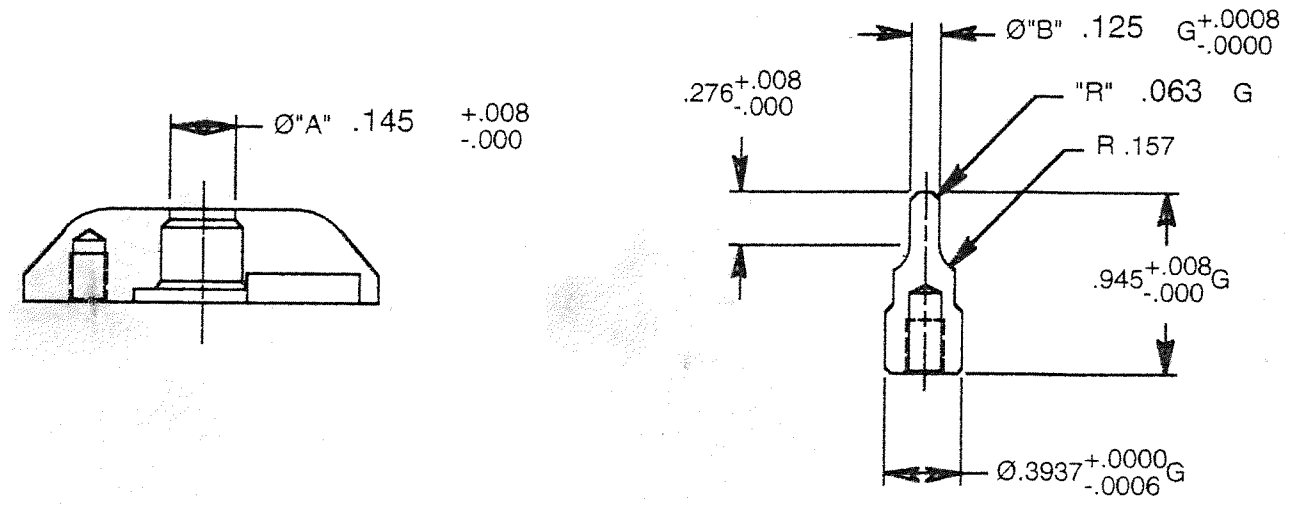
NO	PART NO.	QTY.	DESCRIPTION
8	9000181	0	DIE CHIP
9	5500206	0	EJECTOR PLATE
10	01006012	3	SHOULDER BOLT 6x12 (STO)
11	00105012	0	M5x12mm S.H.C.S.
12	01212025	3	Ø12x25mm URETHANE SPRING
13	5500221	0	DIE BLOCK

NOTES:
1.) LENGTH OF Ø"C"



DIE CHIP 9000181
TOOL/MARKING: PAEXT401-0924

EJECTOR PLATE 5500206
TOOL/MARKING: PAEXT401-0924



REV	DESCRIPTION	APPROVED	DATE	DESCRIPTION : ROUND CHIP TYPE EXTRUSION TOOL (STD.)	CUSTOMER: BEAVERTON PARTS MFG
REVISIONS				DWG NO PAEXT4010924	STA SIZE 125 SCALE 1/1 SIZE B
ALL UNSPECIFIED TOLERANCES				ET #	TOOL/MARKING# PAEXT401-0924
INCH	LINEAR			DRAWN BY STEVE	DATE 10/20/97 MATERIAL
	TOLERANCE	0-.63	<.63-2.48	CHECKED BY	DATE
		±.008	±.012		Rc
			<2.48-9.95		REV
			±.020		
			<9.95-39.37		
			±.032		
			<1.97-4.72		
			±.33°		
			<4.72-15.75		
			±.166°		