

# Wilson Tool International

12912 Farham Avenue  
White Bear Lake, Minnesota 55110  
Phone 1-800-328-9646

UPS SHIPPER NO. MN 5-65-685

PKG.I.D.# 202-9248

[829248]

ACCOUNT NO. 971231800 PPS NO. 720932

SOLD TO TRIAX METAL PROD INC  
1880 SW MERLO DRIVE  
BEAVERTON OR 97006  
USA

SHIP TO TRIAX METAL PROD INC  
1880 SW MERLO DRIVE  
BEAVERTON OR 97006  
USA

# 16



P.O. NUMBER 38032 60F6

CUSTOMER TRIAX METAL PROD INC

W.T. NUMBER 2029248	ORDER DATE 12/08/1998	TARGET SHIP DATE 12/16/1998	CUSTOMER CONTACT SHAWN FITCH	CUSTOMER PHONE NO. 503-649-9500	QUESTIONS CONTACT Doug Whorton	TERMS NET 10
------------------------	--------------------------	--------------------------------	---------------------------------	------------------------------------	-----------------------------------	-----------------

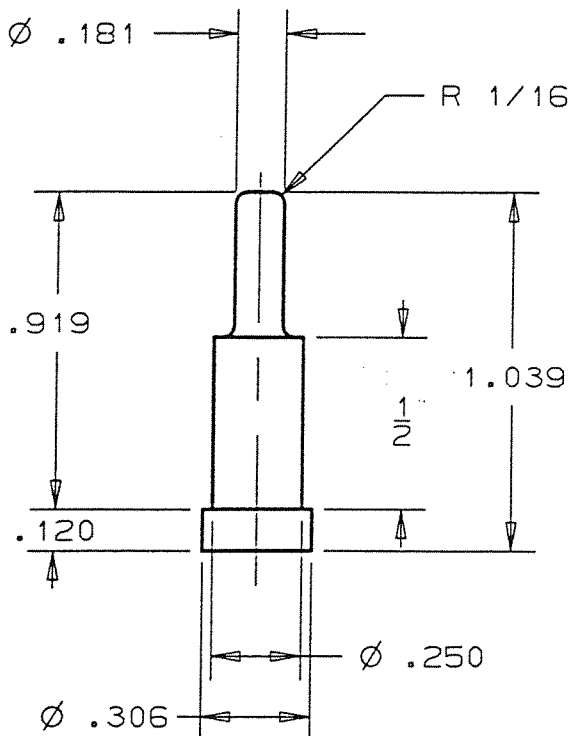
SALES NO. 24	INSTRUCTIONS SHIPW/2029243-48	SHIP VIA UPS 2ND DAY PKG
-----------------	----------------------------------	--------------------------

ITEM	QUANTITY	PART NO.	SHAPE	DIM1	DIM2	DIM3	CLEARANCE
1	1	02254	SP	0.000	0.000	0.000	0.000

THICK TURRET, 1 1/4 F/U EXTRUSION P & D ASSY .181 DIA

*MS form tap*

**\*SEND COMPLETE ASS'Y\***



1 1/4" STATION  
OPTIMA  
3 URETHANE DIE  
METRIC HARDWARE  
SLEEVE LENGTH: .715  
URETHANE LENGTH: .862  
MATL: .060 (1.5) M.S.  
MACH: VIPROS 358 (THICK)  
ADJ. PUNCH LENGTH: 8.010  
PUNCH TIP:  $\varnothing .800$   
PUNCH OPENING:  $\varnothing .253$   
DIE CAP : 00006-12  
-> OPENING:  $\varnothing .210$   
-> WEB THICKNESS: .147  
APPROX. PREPUNCH:  
->  $\varnothing .125$  (3.2)  
OVERALL FORM HEIGHT: .120

**FILED  
ON  
ODS**

SLM - ODS

PACKING LIST



\*629248000045500\*