



Acct# 1018326

Wilson Tool Intl. Plant  
12912 Farnham Avenue  
WHITE BEAR LAKE, MN 55110  
US

Ship Via: UPS 2nd Day Air  
SO: 897922-10  
Prod Ord: 6949162  
P.O. Number 75739  
Payment Terms Net due in 10 days

Sold To Triax Metal Products LLC  
1880 SW Merlo Drive  
CharBEAVERTON OR 97006  
US

Ship To Triax Metal Products LLC  
1880 SW Merlo Drive  
BEAVERTON OR 97006  
US

Contact: Shaun Fitch

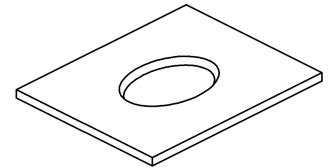
Phone: 503-649-9500

Fax: 503-649-1888

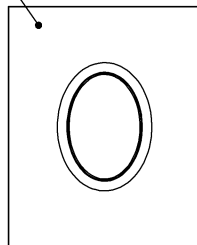
Email: shaun@triaxmetal.com

Order Date	Target Ship Date	Question Contact	Instructions
12/08/2011	12/16/2011	Dave Moszer	
QTY: 1 2511 1-1/4 Thick Emboss Shape Form-Down			
ELLIPTICAL SHAPE			
STATION: B STATION (1-1/4)	RELIEF: NO RELIEF	KEYING: STANDARD	MATL: ALUMINUM
	AUTO INDX: NO		MATL THK: 0.0500 in
MACHINE: AMADA			
MODEL: PEGA 358			COATING: NO COATING
Item 1 - FULL SET			

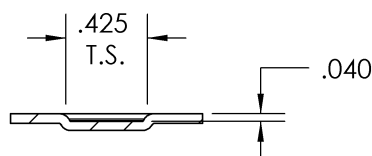
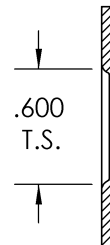
NO LENGTH TAG!  
ADJUST UPPER UNIT LENGTH TO: 8.060



TOP OF  
SHEET



PIN



JDB  
PROD# 6949162

APPROVED BY: CUSTOMER  
DATE: 2011-12-13

These commodities, technology, or software were exported in accordance with the Export Administration Regulations. Diversion to U.S. law is prohibited.